

Introduction:

Our goal is to keep this as simple as possible, while clearly understanding that taking site measurements require concentration, and attention to detail. Please take your time, and follow the step-by-step instructions. Keep in mind we are always available to answer any of your questions.

How to Get Started:

Before you actually begin measuring, we suggest you take the instructions and illustrations, and do a walk-thru of the actual rooms/areas you have decided to wainscot. Do this a day or so before you actually intend on taking measurements. Make sure you can visually match-up the step-by-step instructions with your rooms/areas. Jot down any questions, or sketch-out any walls which you have a question about.

E-mail, or Fax us a drawing:

sitemeasurements@wainscotsolutions.com

Fax: (203) 702-5269

Why don't we provide phone support? 1. We want to make sure we have a visual picture, or written explanation, of what you need help with. 2. We know you have taken the time to think through the question. 3. You know (most importantly) we have taken the time to think through your question, and give you a complete, accurate, and documented answer. Yes, it takes more time, but we know this is an important investment in your home and well worth taking the time making sure you've got.

TOOLS

All you will need is:

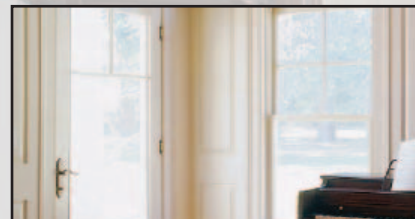
1. A calm level head...
2. 25' Tape Measure
3. Two-Foot Level (minimally)
4. Builders Square

MEASURING GUIDELINES

1. Measure each wall in two locations: Close to Floor Level and At the Height of your Wainscoting. Record the longest measurement. This is to account for walls being out of plumb.
 2. Measure to the 1/16 of an inch
 3. Don't be concerned with drawing to scale! It is far more important for you to focus your energy and time on taking accurate measurements. Don't worry, we'll figure out your drawings. It's the measurements which are critical!
 4. "Measure twice, cut once....!"
- Once you've taken all your measurements, take a break and walk away from it. Then check your measurements one more time.

VISUAL REMINDERS

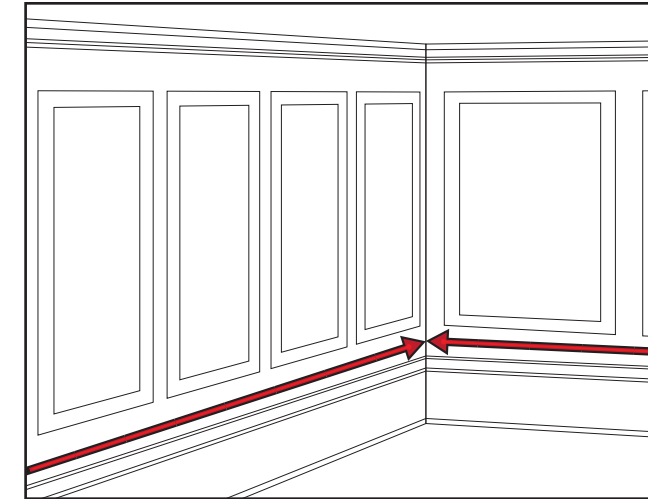
1. Stairway Stringer—What you will be measuring against for Angled-Stair wainscoting
2. Casings—The finish around Doors, Entranceways and Windows, installed prior to taking measurements.



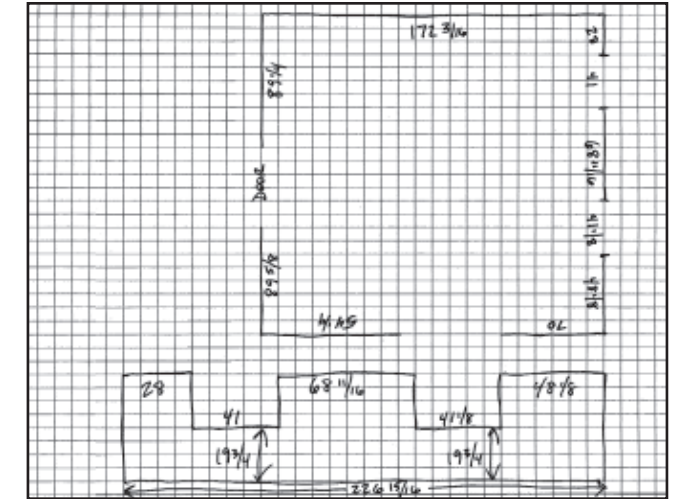
Straight Panels



Any wall with a level floor and no angle at the top of wainscoting. For bay areas, measure each length of bay as Straight Panels.

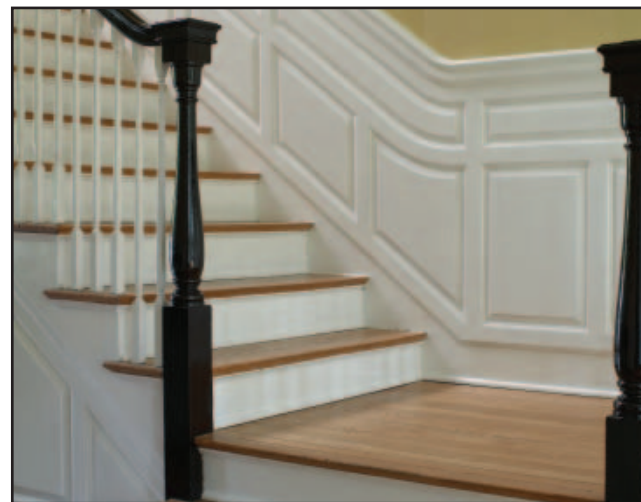


Measure the length of each straight wall at baseboard. (Include length under windows, exclude door openings)

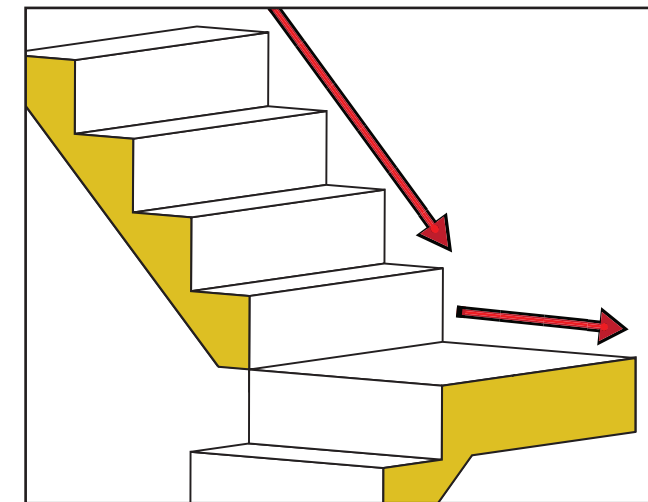


Sample Site Measurement Worksheet.
Window Wall Elevation below.

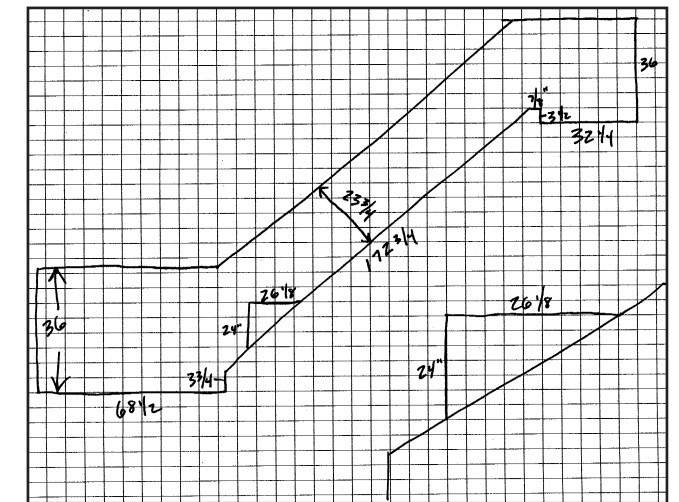
Angled Panels



Measure from top to bottom of stairway stringer.

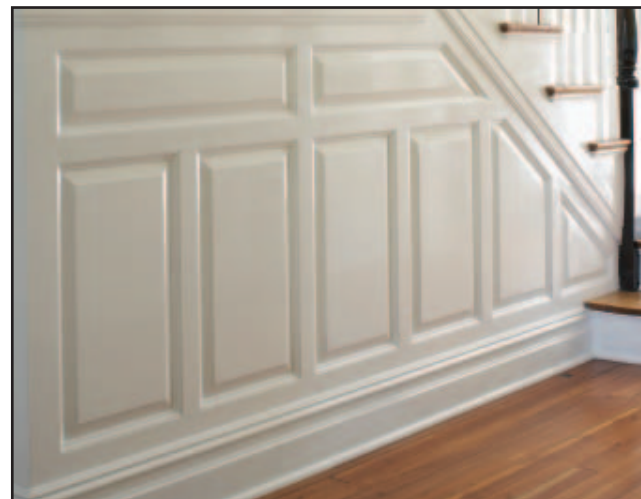


For stairway with landings, measure landings as Straight Panels

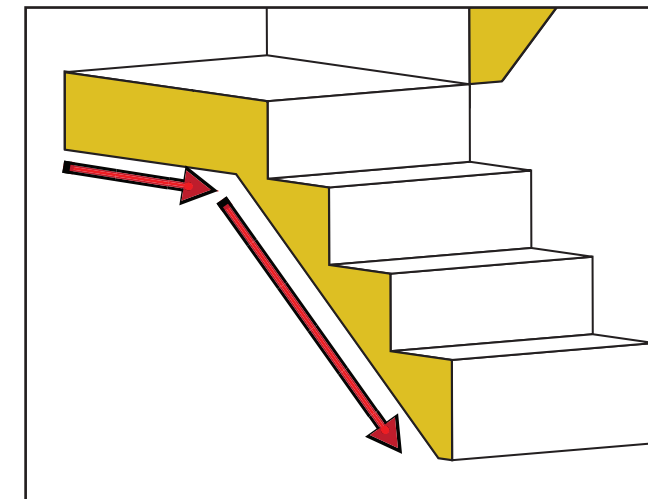


Sample Site Measurement Worksheet.

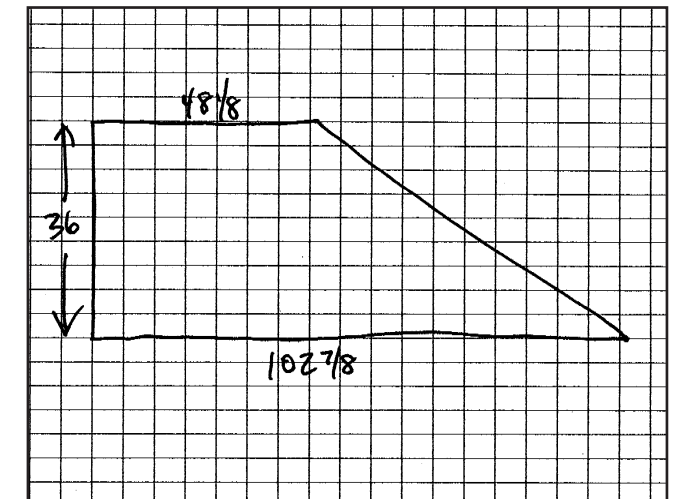
Combinations



Take 2 measurements: 1. Measure any length with an angle as Angled Panel (measure at angle)



2. Measure Straight Wall portion as Straight Panel (measure at baseboard)



Sample Site Measurement Worksheet